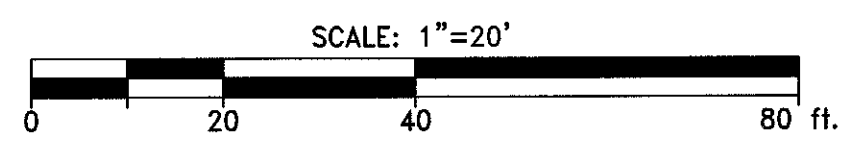
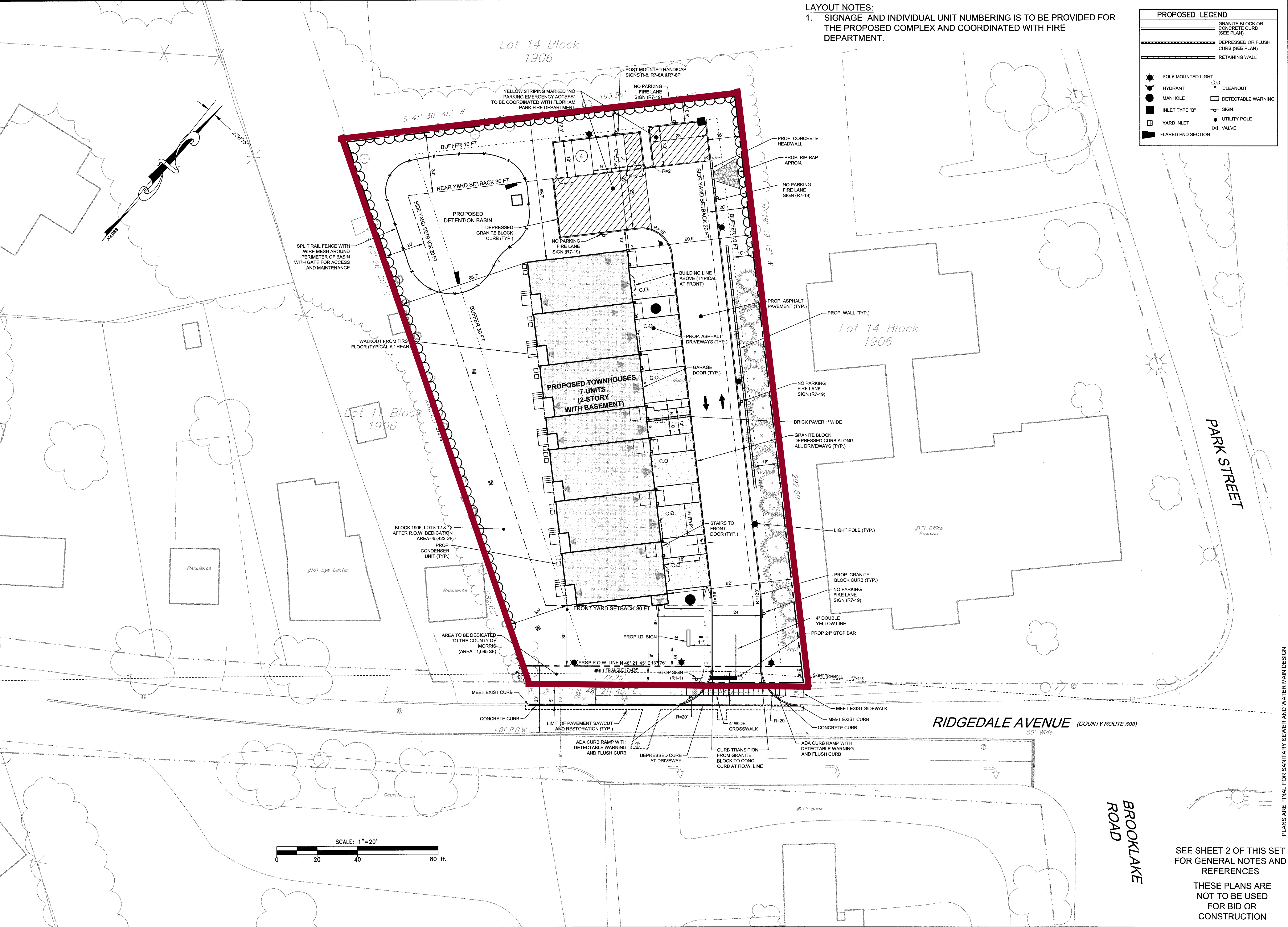


**LAYOUT NOTES:**  
 1. SIGNAGE AND INDIVIDUAL UNIT NUMBERING IS TO BE PROVIDED FOR THE PROPOSED COMPLEX AND COORDINATED WITH FIRE DEPARTMENT.

PROPOSED LEGEND	
	GRANITE BLOCK OR CONCRETE CURB (SEE PLAN)
	DEPRESSED OR FLUSH CURB (SEE PLAN)
	RETAINING WALL
	POLE MOUNTED LIGHT
	HYDRANT
	MANHOLE
	INLET TYPE "B"
	YARD INLET
	FLARED END SECTION
	C.O.
	CLEANOUT
	DETECTABLE WARNING
	SIGN
	UTILITY POLE
	VALVE



PLANS ARE FINAL FOR SANITARY SEWER AND WATER MAIN DESIGN

SEE SHEET 2 OF THIS SET FOR GENERAL NOTES AND REFERENCES  
 THESE PLANS ARE NOT TO BE USED FOR BID OR CONSTRUCTION

BROOKLAKE ROAD

RIDGEDALE AVENUE (COUNTY ROUTE 608)  
 50' Wide

PARK STREET

Lot 14 Block 1906

Lot 14 Block 1906

Lot 1, Block 1906

PROPOSED TOWNHOUSES  
 7-UNITS  
 (2-STORY WITH BASEMENT)

BLOCK 1906, LOTS 12 & 13  
 AFTER R.O.W. DEDICATION  
 AREA=45,422 SF  
 PROP. CONDENSER UNIT (TYP.)

AREA TO BE DEDICATED TO THE COUNTY OF MORRIS (AREA=1,095 SF)

RIDGEDALE AVENUE (COUNTY ROUTE 608)  
 50' Wide

BROOKLAKE ROAD

PARK STREET

PROPOSED TOWNHOUSES  
 7-UNITS  
 (2-STORY WITH BASEMENT)

BLOCK 1906, LOTS 12 & 13  
 AFTER R.O.W. DEDICATION  
 AREA=45,422 SF  
 PROP. CONDENSER UNIT (TYP.)

AREA TO BE DEDICATED TO THE COUNTY OF MORRIS (AREA=1,095 SF)

RIDGEDALE AVENUE (COUNTY ROUTE 608)  
 50' Wide

BROOKLAKE ROAD

PARK STREET